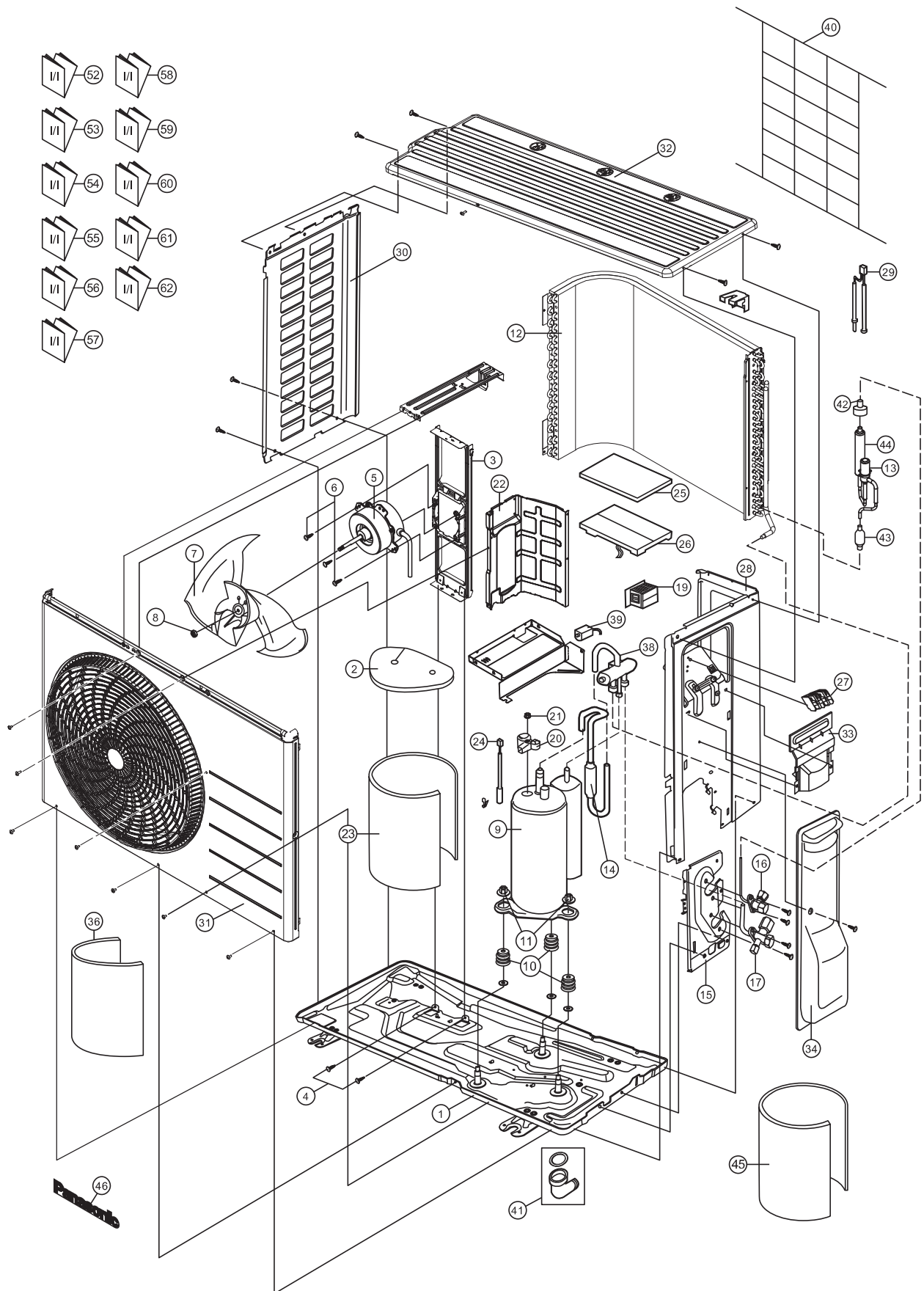


## 22.2 Outdoor Unit

### 22.2.1 CU-Z20TKE CU-Z25TKE



#### Note

The above exploded view is for the purpose of parts disassembly and replacement.  
The non-numbered parts are not kept as standard service parts.

SAFETY	REF. NO.	PART NAME & DESCRIPTION	QTY.	CU-Z20TKE	CU-Z25TKE	REMARK
	1	CHASSIS COMPLETE	1	CWD52K1399	←	
	2	SOUND PROOF MATERIAL (TOP)	1	CWG302314	CWG302570	
	3	FAN MOTOR BRACKET	1	CWD541157	←	
	4	SCREW - FAN MOTOR BRACKET	2	CWH551217	←	
⚠	5	FAN MOTOR	1	ARS6411AC	L6CAYYYL0064	O
	6	SCREW - FAN MOTOR MOUNT	4	CWH55252J	←	
	7	PROPELLER FAN ASSY	1	CWH03K1100	←	
	8	NUT - PROPELLER FAN	1	CWH56053J	←	
⚠	9	COMPRESSOR	1	9RS092XAA21	9RS102XGA21	O
	10	ANTI - VIBRATION BUSHING	3	CWH50077	←	
	11	NUT - COMPRESSOR MOUNT	3	CWH561096	←	
	12	CONDENSER	1	CWB32C3797	ACXB32C00760	
	13	EXPANSION VALVE	1	CWB051078	←	
	14	DISCHARGE MUFFLER (4 W.VALVE)	1	CWB121010	←	
	15	HOLDER COUPLING	1	CWH351233	←	
	16	2-WAYS VALVE (LIQUID)	1	CWB021589	CWB021654	O
	17	3-WAY VALVE (GAS)	1	CWB011374	←	O
⚠	19	REACTOR	1	G0C193J00023	G0C392J00028	O
	20	TERMINAL COVER	1	CWH171039A	←	
	21	NUT - TERMINAL COVER	1	CWH7080300J	←	
	22	SOUND PROOF BOARD	1	CWH151427	CWH151428	
	23	SOUND PROOF MATERIAL	1	CWG302948	ACXG30-01180	
	24	SENSOR CO - COMP TEMP	1	CWA50C2205	←	O
	25	CONTROL BOARD COVER - TOP	1	CWH131264	ACXH13-00450	
⚠	26	ELECTRONIC CONTROLLER - MAIN	1	ACXA73C20600R	ACXA73C20610R	O
⚠	27	TERMINAL BOARD ASSY	1	CWA28K1298	←	O
	28	CABINET SIDE PLATE CO.	1	ACXE04C00200	ACXE04C00460	
	29	SENSOR CO - AIR TEMP AND PIPE TEMP	1	CWA50C3080	←	O
	30	CABINET SIDE PLATE (LEFT)	1	CWE041858A	←	
	31	CABINET FRONT PLATE CO.	1	CWE06C1566	←	
	32	CABINET TOP PLATE	1	CWE031230A	←	
	33	PLATE - C. B. COVER TERMINAL	1	CWH131301	←	
	34	CONTROL BOARD COVER CO.	1	CWH13C1359	←	
	36	SOUND PROOF MATERIAL	1	CWG302316	←	
	38	4-WAYS VALVE	1	ACXB00-00130	←	O
⚠	39	V-COIL COMPLETE (4-WAY VALVE)	1	ACXA43C00250	←	O
	40	WIRE NET	1	ACXD04-00040A	←	
	41	BAG - COMPLETE	1	CWG87C900	←	
⚠	42	V-COIL COMPLETE (EXP. VALVE)	1	CWA43C2603	←	O
	43	STRAINER	1	CWB11094	←	
	44	DISCHARGE MUFFLER	1	CWB121021	←	
	45	SOUND PROOF MATERIAL	1	-	CWG302994	
	46	PANASONIC BADGE	1	CWE373439	←	
	52	INSTALLATION INSTRUCTION	1	ACXF60-03890	←	
	53	INSTALLATION INSTRUCTION	1	ACXF60-03900	←	
	54	INSTALLATION INSTRUCTION	1	ACXF60-03910	←	
	55	INSTALLATION INSTRUCTION	1	ACXF60-03920	←	
	56	INSTALLATION INSTRUCTION	1	ACXF60-03930	←	

SAFETY	REF. NO.	PART NAME & DESCRIPTION	QTY.	CU-Z20TKE	CU-Z25TKE	REMARK
	57	INSTALLATION INSTRUCTION	1	ACXF60-03940	←	
	58	INSTALLATION INSTRUCTION	1	ACXF60-03950	←	
	59	INSTALLATION INSTRUCTION	1	ACXF60-03960	←	
	60	INSTALLATION INSTRUCTION	1	ACXF60-03970	←	
	61	INSTALLATION INSTRUCTION	1	ACXF60-03980	←	
	62	INSTALLATION INSTRUCTION	1	ACXF60-03990	←	

(NOTE)

- All parts are supplied from PAPAMY, Malaysia (Vendor Code: 00029488).
- “O” marked parts are recommended to be kept in stock.